

# DO-201AD Packing information

B019, Rev. -

## 1. Finish Goods PKG photo



## 2. Packing method



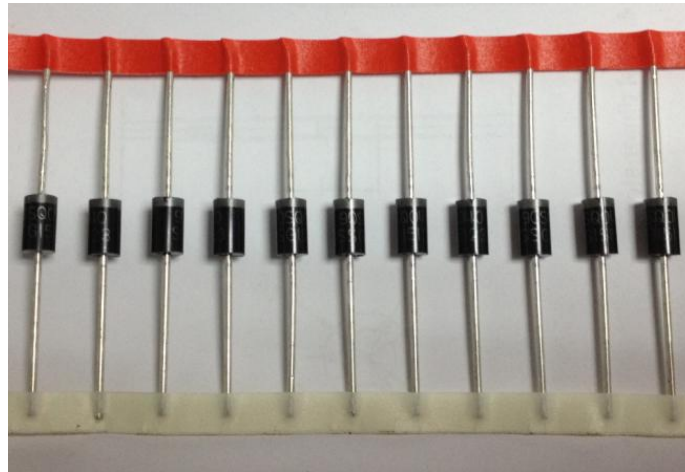
Fig.1- Reel pack for Axial Lead

Table 1. Packing information

Package version	Pcs/Tape	Tape per box	Inner box dimensions L×W×H (mm)	Inner box weight (Kg)	Outer box (Pcs)	Outer box dimensions L×W×H (mm)	Outer box weight (Kg)
DO-201AD	1250	1	255*80*148	1.41	12.5K	430*270*320	15

### 3. Product orientation

Standard product orientation DO-201AD



direction of feed →

Fig 2. Product orientation in carrier tape

### 4. Carrier tape dimensions

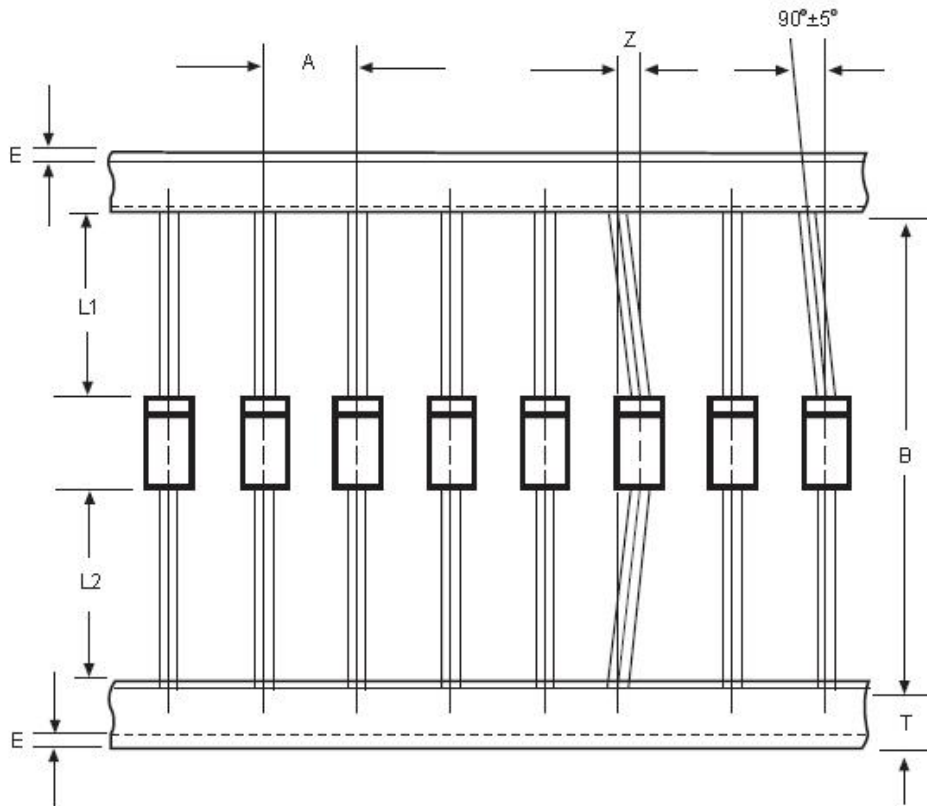


Fig 3. Carrier tape dimensions

Table 2. Carrier tape dimensions

COMPONENT OUTLINE	COMPONENT PITCH A	INNER TAPE PITCH B		CUMULATIVE PITCH TOLERANCE
	$\pm 0.5\text{mm}$ (.020")	$\pm 0.5\text{mm}$ (.020")	$\pm 1.5\text{mm}$ (0.059")	
DO-201AD	10.0mm		52.4mm	2.0mm/10pitch
ITEM	SYMBOL	SPECIFICATIONS(mm)	SPECIFICATION(inch)	
Component alignment	Z	1.2max.	0.048max.	
Tape width	T	$6.0 \pm 0.4$	$0.236 \pm 0.016$	
Exposed adhesive	E	0.8max.	0.032max.	
Body eccentricity	IL1-L2I	1.0max.	0.040max.	
Reel inner diameter	D1	$85.7 + 0.3$	$3.375 \pm 0.012$	